

PEZZIMENTI TUNNELBORE



Specialising in: **Highly Accurate, Laser-Guided Microtunnels.**

Blackheath



PHONE | + 61 (2) 4735 6676

WEBSITE | www.pezzimenti.com.au



In order to transfer sewage from the eastern to the western side of the Connaught St ridge, Sydney Water had the choice of constructing a Sewerage Pumping Station (SPS) and rising main or drilling through the ridge and lay a gravity Ø400 PE carrier for a distance of 500m. Economic modelling showed the gravity option to be the better choice.

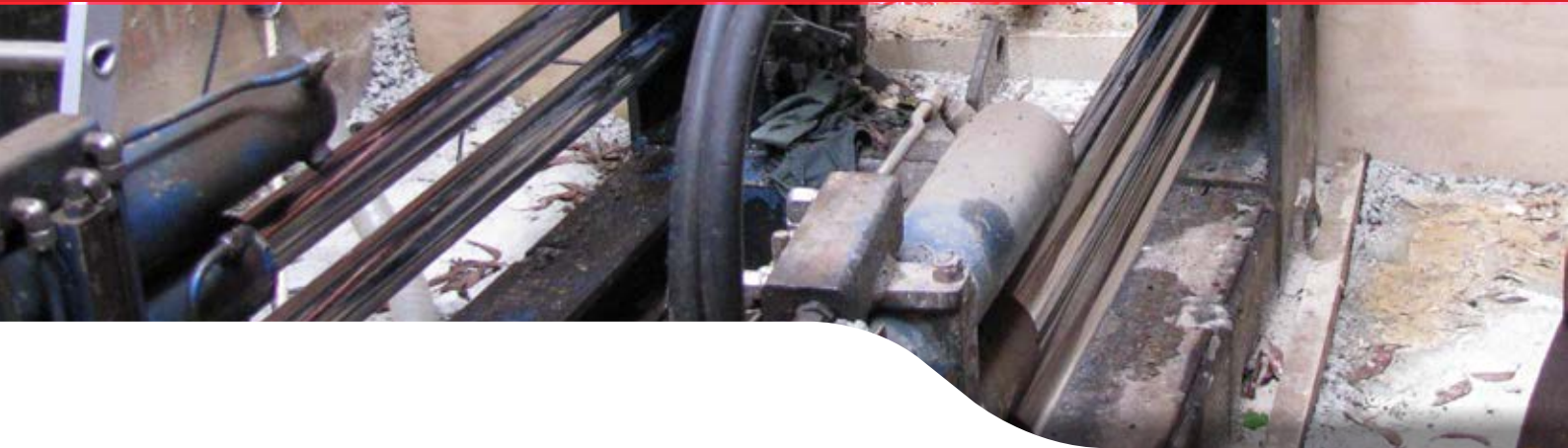
Client / Head Contractor
Sydney Water

Location
Blackheath

Length
Bore 1. 152m
Bore 2. 173m
Bore 3. 164m } 337m

Manufacturer
Pezzimenti Laserbore™

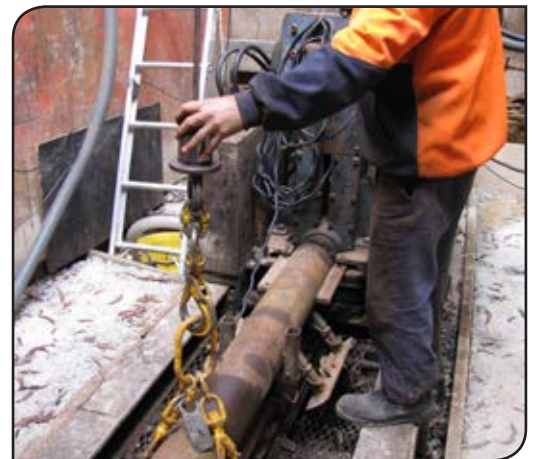
Categories
**Long Distance Intercept Bore
Sandstone
Freebore**



+ Intercept Bore

The 500m was split into 2 sections 152m and 337m. A 16m deep shaft was constructed at Ch 152. The 152 m x Ø530mm microtunnel was constructed first, and then the 337m intercept bore was completed in 2 stages- 173m from the upstream end and 164m from the deep 16m shaft on the downstream end. The intercept microtunnel met within 40mm at the breakout point some 35m below the Connaught St ridge.

The PE pipe was pulled in in one continuous length by the client and the annulus grouted by Pezzimenti Tunnelbore.



+ Image Caption



+ Image Caption

PEZZIMENTI TUNNELBORE



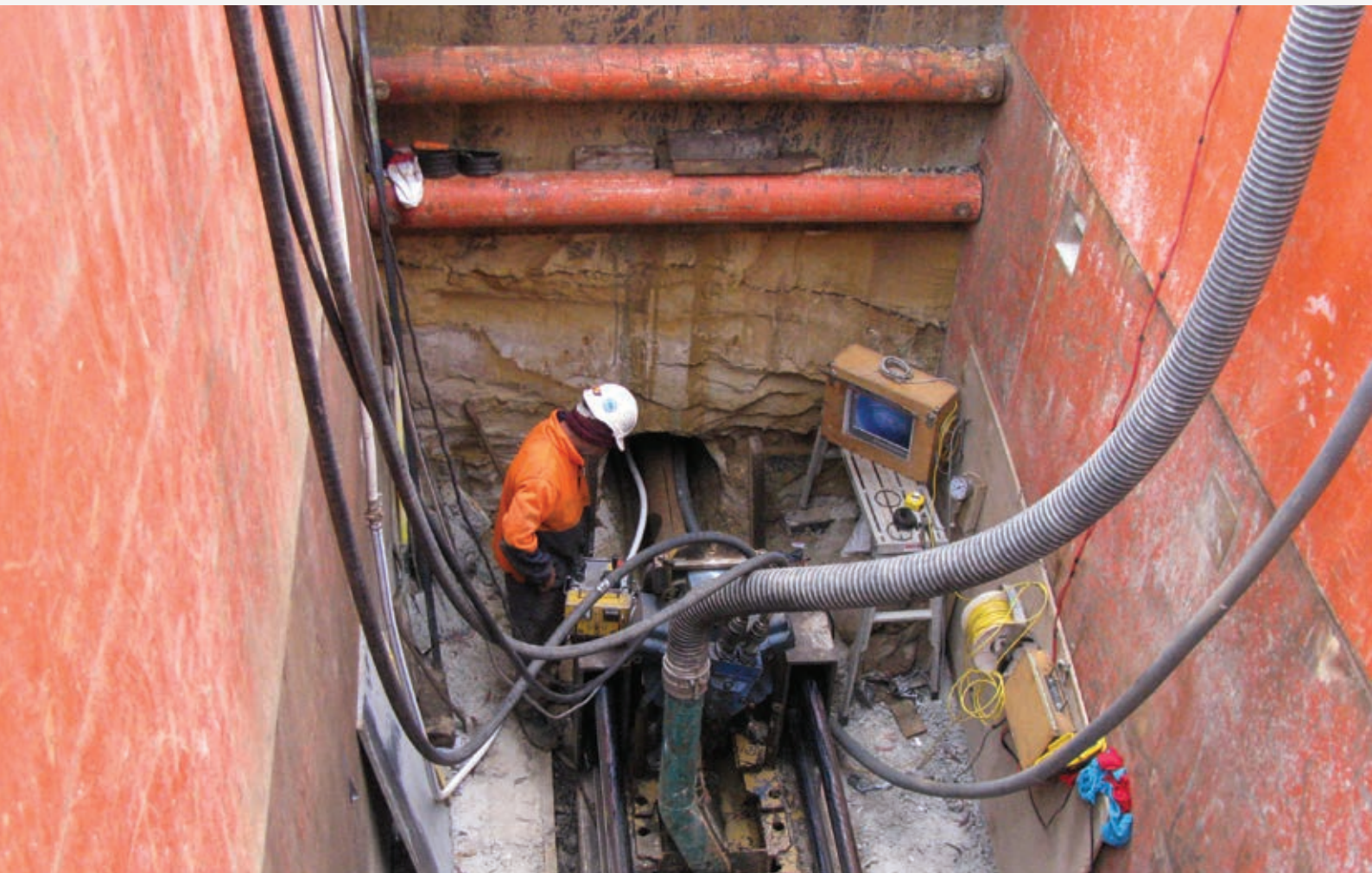
For all inquiries – including Job Inspections,
Quotations and Project Feasibilities –
please don't hesitate to contact Pezzimenti
Tunnelbore. We are confident we'll hit the
mark on your next microtunneling project.

+ WEBSITE

www.pezzimenti.com.au

+ PHONE

61 (2) 4735 6676



When Accuracy Matters.