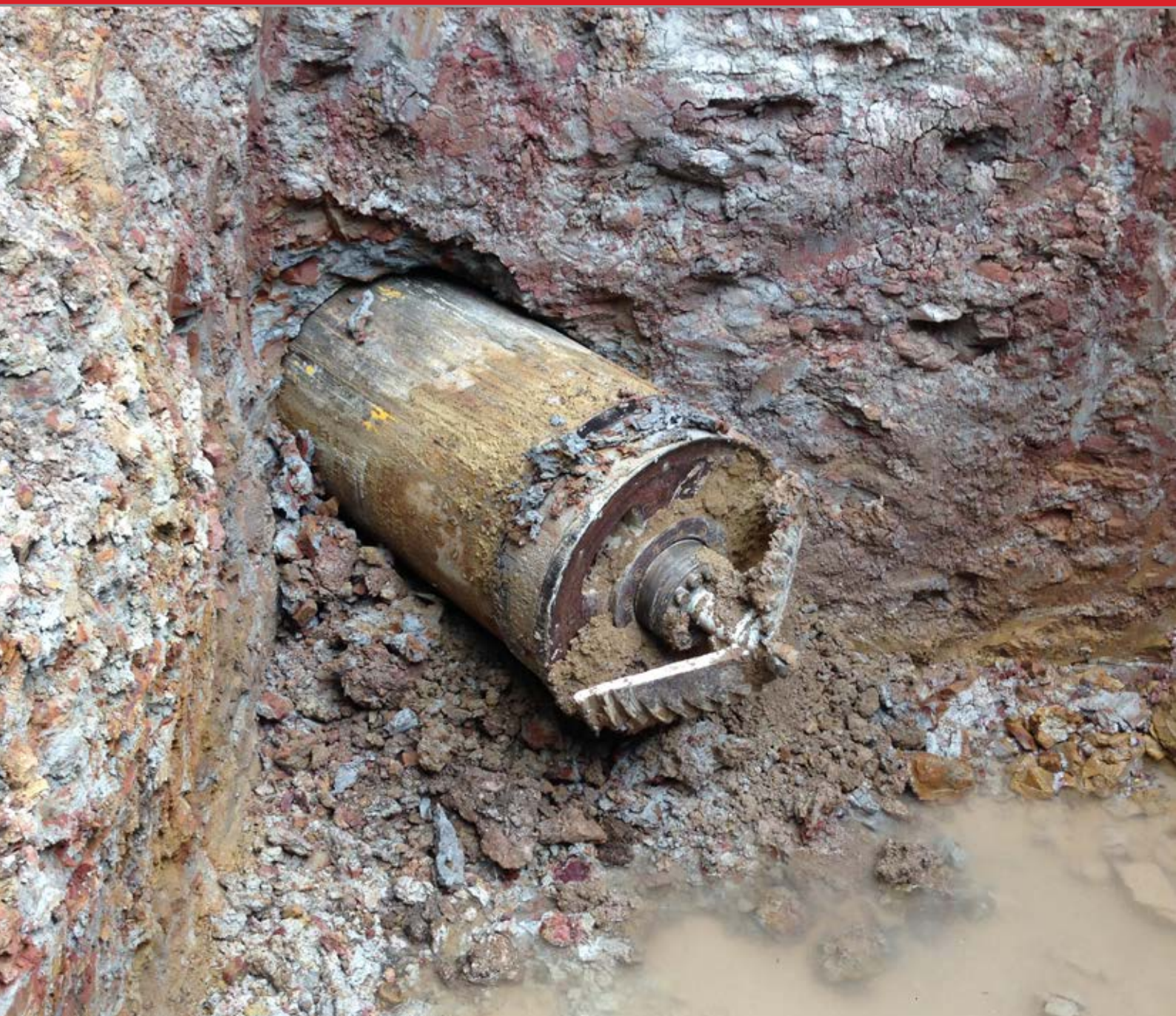


# PEZZIMENTI TUNNELBORE



Specialising in: **Highly Accurate, Laser-Guided Microtunnels.**

Colebee



PHONE | + 61 (2) 4735 6676

WEBSITE | [www.pezzimenti.com.au](http://www.pezzimenti.com.au)





The suburb of Colebee in Sydney’s North West is dominated by a world class golf course and is a thriving residential area. Due to the lie of the land new sewer mains had to be designed to run adjacent to and under the fairways, greens and tees of the course.

In all the works required the installation by microtunnelling of 782 lin metres Ø225, 300 and 375 PVC encased by steel casing pipe. The drive lengths were 170m, 120m, 185m 132m & 175m.

---

Length  
**Total: 782**  
 170m, 120m, 185m, 132m, 175m

---

Bore Diameters  
 Varied between Ø530mm and  
 Ø630mm

---

Jacked Outer Casing  
**Steel**

---

Carrier Pipe  
 Ø225, 300, 375 PVC

---

Ground  
 Shale and Clay, High Plasticity Clay

---

Grade  
 From 1% to 1.73%%

---



**Pezzimenti Tunnelbore were awarded the works by Zinfra P/L.** The works were designed by Qalchek.

**The ground conditions were shale and clay.** On two of the runs high plasticity clay was encountered which slowed progress considerably.

**In all progress achieved was 20-30m per day for the drilling.** Freeboring was carried out wherever possible to hasten the process and to change the cutters as required in the highly variable ground conditions.





# PEZZIMENTI TUNNELBORE



For all inquiries – including Job  
Inspections, Quotations and Project  
Feasibilities – please don't hesitate  
to contact Pezzimenti Tunnelbore.  
We are confident we'll hit the mark  
on your next microtunneling project.

+ WEBSITE

[www.pezzimenti.com.au](http://www.pezzimenti.com.au)

+ PHONE

61 (2) 4735 6676



**When Accuracy Matters.**