

PEZZIMENTI TUNNELBORE



Specialising in: **Highly Accurate, Laser-Guided Microtunnels.**

Riverstone

Steel Casing being craned into
position ready to lower into the shaft



PHONE | + 61 (2) 4735 6676

WEBSITE | www.pezzimenti.com.au

Riverstone

The steel casing is lowered into the shaft. The steel casing with spigot collars is stitch welded on the top of the casing prior to jacking. Stitch welding holds the casing string together but allows some wriggle room for the casing inside the microtunnel which minimises friction on the casing.



With the completion of the main trunk sewers running along First Ponds Creek a few years ago, the next stage of the project was to construction major lead-ins off the trunk sewer to enable the construction of future reticulation sewers. Comdain was awarded the civil contract and then awarded the microtunnelling works to Pezzimenti Tunnelbore.

Microtunnelling was the preferred method of construction as there are areas of significant Aboriginal Heritage.

Method

Pipejack

Reason

Aboriginal heritage site

Ground

Saturated clayey sands and gravels

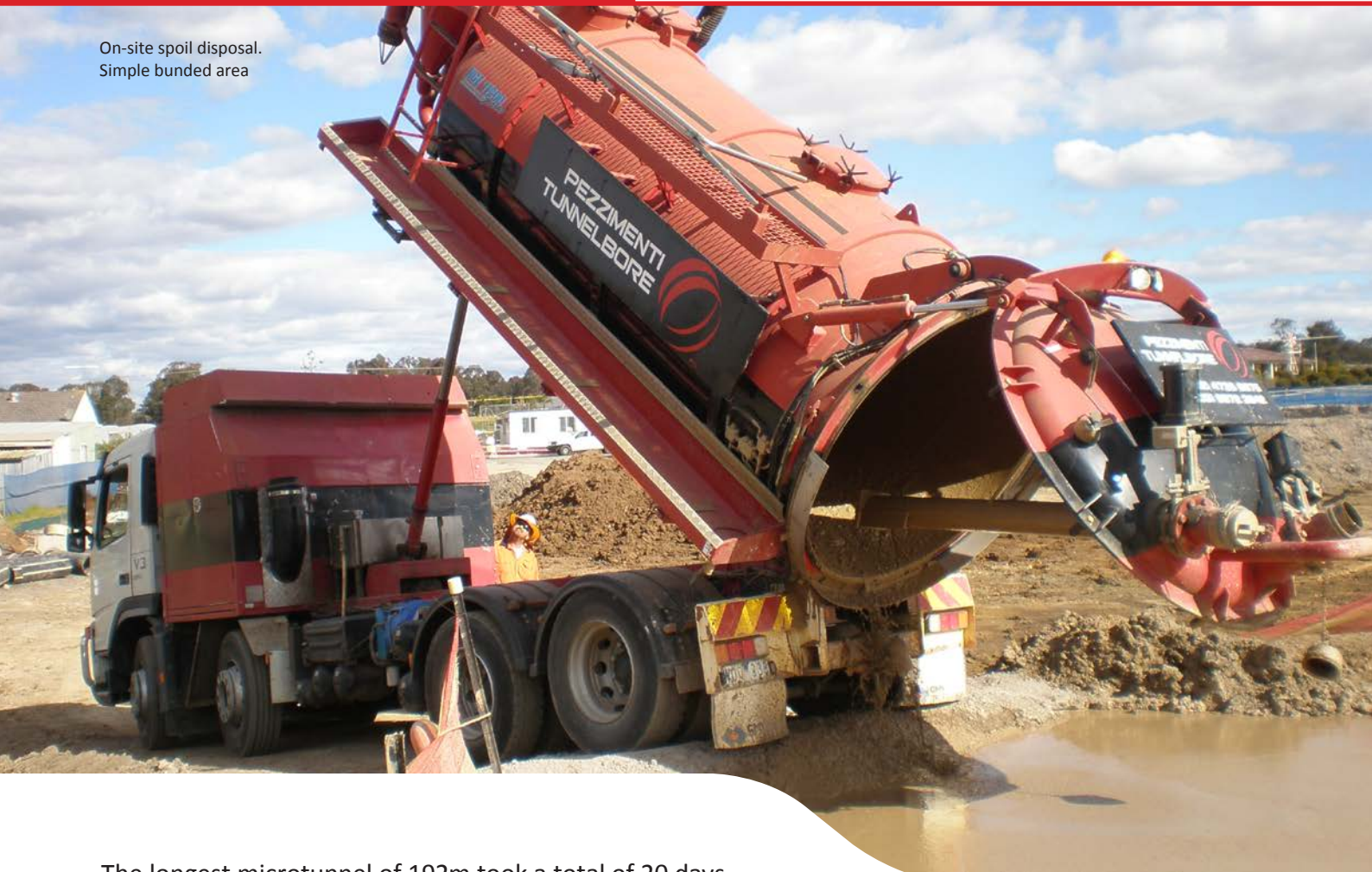
Steel Casing

406 Steel casing, 508 Steel, 610 steel casing

Carrier Pipe

225 PVC SN8, 300 PP and 450 PP

On-site spoil disposal.
Simple bunded area



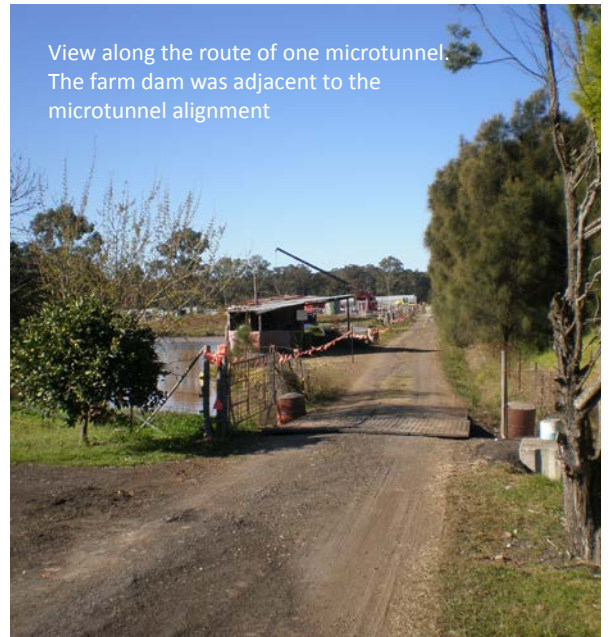
The longest microtunnel of 192m took a total of 20 days.

	1	2	3	4
Method	Pipejack	Pipejack	Pipejack	Pipejack
Reason for Microtunnel	Aboriginal Heritage Sites	Aboriginal Heritage Sites	Aboriginal Heritage Sites	Aboriginal Heritage Sites
Length (m)	68	124	192	101
Bore Diameter (mm)	430	630	630	530
Outer Casing - (Ømm material)	406 Steel casing	610 steel casing	610 steel casing	508 Steel
Carrier Pipe (Ømm material)	225 PVC SN8	450 PP	450 PP	300 PP
Grade (%)	1.12	1.34	1.03	1.12
Ground	Saturated clayey sands and gravels	Saturated clayey sands and gravels	Saturated clayey sands and gravels	Saturated clayey sands and gravels
No of Working Days - excl. wet weather	10	17	20	9

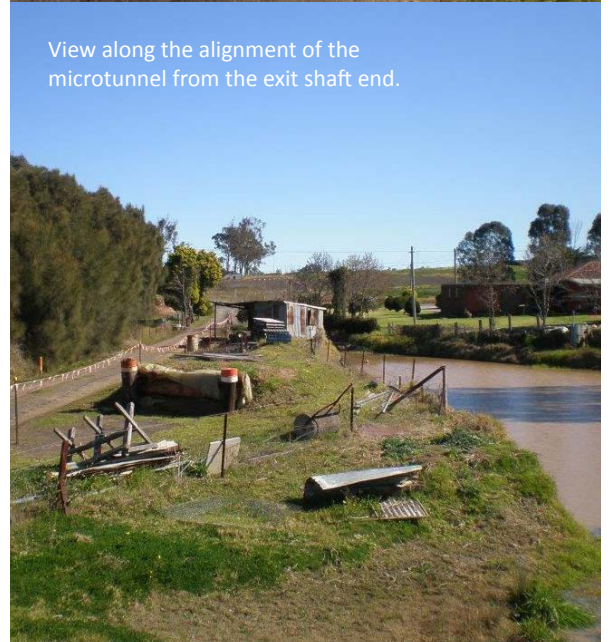
The GRP carrier pipe has been sliplined into the 600mm diameter steel casing. This microtunnel was 124m long



View along the route of one microtunnel. The farm dam was adjacent to the microtunnel alignment



View along the alignment of the microtunnel from the exit shaft end.



PEZZIMENTI TUNNELBORE



For all inquiries – including Job
Inspections, Quotations and Project
Feasibilities – please don't hesitate
to contact Pezzimenti Tunnelbore.
We are confident we'll hit the mark
on your next microtunneling project.

+ WEBSITE

www.pezzimenti.com.au

+ PHONE

61 (2) 4735 6676



When Accuracy Matters.