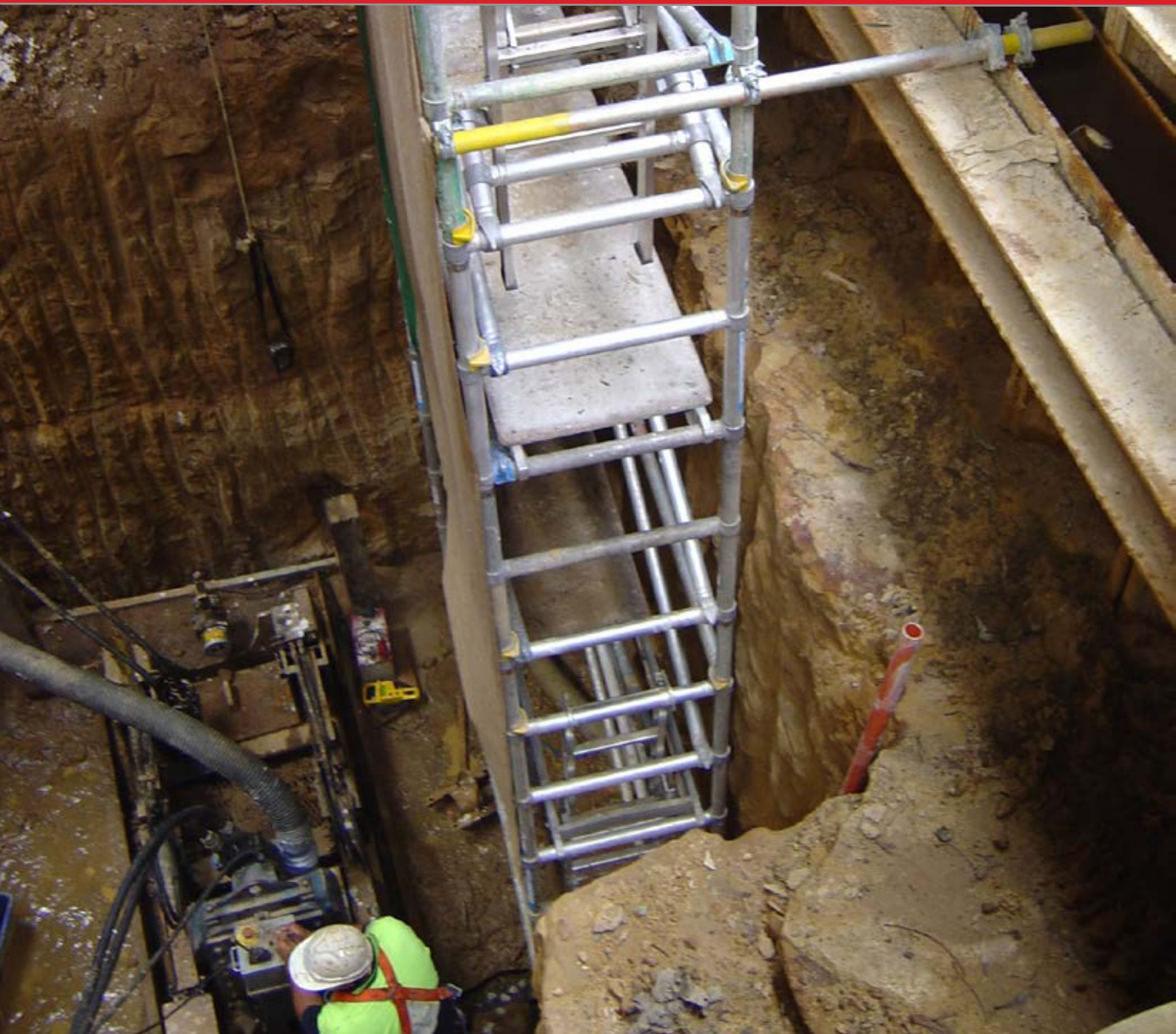


PEZZIMENTI TUNNELBORE



Specialising in: **Highly Accurate, Laser-Guided Microtunnels.**

Appin



PHONE | + 61 (2) 4735 6676

WEBSITE | www.pezzimenti.com.au



As part of the Sydney Water Priority Sewerage Program for first time sewerage of properties, sewage was required to be transferred at depths up to 12m through a ridge for a distance of 580m to accommodate a 300mm Hobas sewer pipe. The design came down to 2 microtunnels the first 318m long and the second 262m long.

+ Design Phase Allowances

During the design phase allowance had been made to microtunnel from either end of each bore in case the intercept method was required.

Client / Head Contractor

Sydney Water

Location

Appin, NSW, Australia

Length

Bore 1: 318 m, Bore 2: 262m

Manufacturer

Pezzimenti Laserbore™

Categories

Intercept Bore
Deep Shaft
Sewerage



+ Intercept Bore

PSP excavated the shafts and the 318m bore was staged with the first half of the bore drilled to 200m from the downstream end. The rig was then relocated to the upstream end and 118m drilled to intercept the first bore. The Hobas pipe was then pushed in and the annulus grouted.

+ Single Longest Drive - 262m

The 262m long bore was commenced from the downstream end and completed as a single drive to the exit shaft. This was the longest single drive accomplished so far by Pezzimenti Tunnelbore eclipsing the old record by 2m.



+ Laser Light Visible in the 2nd Bore



+ The 2nd tunnel.

PEZZIMENTI TUNNELBORE



For all inquiries – including Job Inspections,
Quotations and Project Feasibilities –
please don't hesitate to contact Pezzimenti
Tunnelbore. We are confident we'll hit the
mark on your next microtunneling project.

+ WEBSITE

www.pezzimenti.com.au

+ PHONE

61 (2) 4735 6676



When Accuracy Matters.